













## 1.2 Rhythmic Values

Rhythm is the pattern of regular or irregular pulses caused by the occurrence of strong and weak beats. Duration of notes, rests, and their subdivisions are illustrated in the following chart:

Name	Duration	Rest	Subdivision
Whole note			
Half note			
Quarter note			
Eighth note			

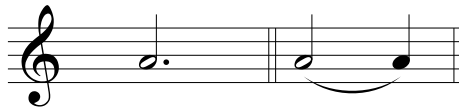
### Tie

The tie is a curved line that connects two or more of the same notes. The note will be held out for the duration of the two note values combined.



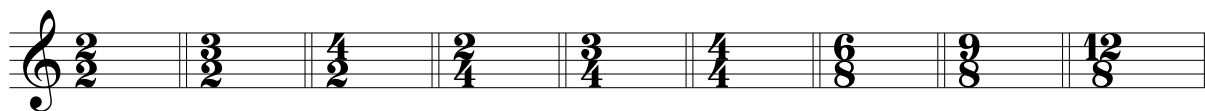
### Dot

A dot is placed to the right of the notehead and lengthens it by half its value. It can be thought of as “the value of the note plus half the value of the note.” A second dot lengthens the dotted note by half the value of the dot.



### Meter

Meter is a regular, recurring pattern of strong and weak beats and is identified at the beginning of a composition by a time signature.



The upper number indicates the number of beats in each measure. The lower number indicates the note value that receives the beat, i.e., **2** signifies a half note, **4** refers to a quarter note, and **8** indicates an eighth note.